

NSQF QUALIFICATION FILE GUIDANCE

Version 6: Draft of 08 March 2016

NSDA Reference

To be added by NSDA

CONTACT DETAILS OF THE BODY SUBMITTING THE QUALIFICATION FILE

Name and address of submitting body:

HCSSC,
Handicrafts and Carpet Sector Skill Council,
EPCH House,
Pocket 6 & 7, Sector C,
Vasant Kunj,
New Delhi-110070

Name and contact details of individual dealing with the submission

Name: Ms. Anupama Giri

Position in the organisation: CEO

Address if different from above: NO

Tel number(s):011-2613983491

E-mail address: ceo@hcsc.in

List of documents submitted in support of the Qualifications File

1. Career Progression of Bamboo Handicrafts Sub-Sector
2. Qualification Pack
3. Minutes of the meeting of GC Consultation meeting
4. NSDC Human Resource & Skills Requirement in Handloom & Handicraft Sector
5. List of QP/NOS validating companies

NSQF QUALIFICATION FILE GUIDANCE

Version 6: Draft of 08 March 2016

SUMMARY

Qualification Title	Bamboo Mat weaver
Qualification Code-	HCS/Q 8702
Nature and purpose of the qualification-	Qualification pack, To help people get employed in the bamboo product manufacturing sector.
Body/bodies which will award the qualification-	Handicrafts and carpet sector skill council(HCSC)
Body which will accredit providers to offer courses leading to the qualification-	Handicrafts and carpet sector skill council(HCSC)
Licensing requirements-	N/A
Level of the qualification in the NSQF-	3
Anticipated volume of training/learning required to complete the qualification-	190
Entry requirements and/or recommendations	- 5 th class
Progression from the qualification-	Supervisor
International comparability where known-	not yet established
Date of planned review of the qualification.-	2018

Formal structure of qualification pack

Title of component & identification code	Mandatory/optional	Estimated size(learning hours)	level
HCS/N 8705 Carry out basic pre-loom operations: Denting and attaching the warp on the loom	Mandatory	30	3
HCS/N 8706 Carry out basic weaving operations: Shedding/ Picking/ Battening to weave mats comprising of basic weaves- Plain and Twill using hand operated loom	Mandatory	50	3
HCS/N 8707 Contribute to achieve quality in bamboo mat weaving	Mandatory	30	3
HCS/N 9908 Working in a team	Mandatory	20	3
HCS/N 9912 Maintain work area and tools	Mandatory	20	3
HCS/N 9913 Maintain health, safety and security at workplace	Mandatory	20	3

Please attach any document giving further detail about the structure of the qualification – eg a Curriculum Document or a Qualification Pack.

Qualification pack attached in annexure

NSQF QUALIFICATION FILE GUIDANCE

Version 6: Draft of 08 March 2016

SECTION 1 ASSESSMENT

Body/Bodies which will carry out assessment:

Assessment agency affiliated to HCSSC.

How will RPL assessment be managed and who will carry it out?

RPL will be based on the same approved Qualification Pack and Assessment Criteria mentioned in the Qualification Pack. The RPL assessment is done by the agency affiliated to Handicrafts and carpet sector skill council

Describe the overall assessment strategy and specific arrangements which have been put in place to ensure that assessment is always valid, reliable and fair and show that these are in line with the requirements of the NSQF.

The assessment is managed by the assessment agency using the question bank approved by the sector skill council which has both the theory and practical questions ,the questions are then divided into many different sets so that all students don't get the same questions once the assessment is done the result is compiled and sent to the sector skill council .The NSQF level 2 and 3 qualifications has a passing marks of 50% and NSQF level 4 and above has 70% as passing marks.

ASSESSMENT EVIDENCE

Complete a grid for each component as listed in "Formal structure of the the qualification" in the Summary.

NOTE: this grid can be replaced by any part of the qualification documentation which shows the same information – ie Learning Outcomes to be assessed, assessment criteria and the means of assessment.

NSQF QUALIFICATION FILE GUIDANCE

Version 6: Draft of 08 March 2016

Title of Component:

CRITERIA FOR ASSESSMENT OF TRAINEES

Job Role : Bamboo Mat Weaver

Qualification Pack : HCS/Q8702

Sector Skill Council : Handicrafts & Carpet Sector Skill Council

Guidelines for Assessment:

1. Criteria for assessment for each Qualification Pack will be created by the Sector Skill Council. Each Performance Criteria (PC) will be assigned marks proportional to its importance in NOS. SSC will also lay down proportion of marks for Theory and Skills Practical for each PC.
2. The assessment for the theory part will be based on knowledge bank of questions created by the SSC.
3. Individual assessment agencies will create unique question papers for theory part for each candidate at each examination/training center (as per assessment criteria below)
4. Individual assessment agencies will create unique evaluations for skill practical for every student at each examination/training center based on this criteria
5. To pass the Qualification Pack , every trainee should score a minimum of 70% in every NOS
6. In case of successfully passing only certain number of NOS's, the trainee is eligible to take subsequent assessment on the balance NOS's to pass the Qualification Pack.

		Total Marks (600)	Out of	Theory	Skills practical
1. HCS/N 8705 (Carry out basic pre-loom operations: Denting and attaching the	PC1. Identify the parts of the hand operated loom and understand their functioning	100	10	4	6

warp on the loom)	PC2. Analyze & interpret the given design (plain or twill weave) which needs to be woven & the type of raw material that is required	6	3	3
	PC3. Select and check appropriate materials- bamboo sticks and yarns, required for weaving the fabric as per the given specifications	4	1	3
	PC4. Conform to product quality standards	3	1	2
	PC5. Check with in-charge /others when unsure of new product details	3	1	2
	PC6. Minimise and dispose the waste materials in the approved manner	3	1	2
	PC7. Carry out operations at a rate which maintains workflow	6	3	3
	PC8. Leave work area safe and secure when work is complete	3	2	1
	PC9. Understand basic or plain drafting	8	4	4
	PC10. Carry out drafting- drawing the warp threads into heald eyelets using the hook as per the given specifications.	12	5	7
	PC11. Detect, analyse and rectify faults while drafting	6	2	4
	PC12. Gradually knot the threads after drafting a set of ends to avoid mistakes in drafting	3	1	2
	PC13. Draw the warp threads in the warped beam through the reed dents as per the given specifications	4	2	2
	PC14. Maintain the reed hook to ensure smooth functioning	3	1	2

	PC15. Attach the warp rolled beam on the loom, in order to keep the loom ready to commence weaving operations		8	3	5
	PC16. Knot the warp threads uniformly to the rod attached to the breast beam/fabric beam		7	3	4
	PC17. Maintain the correct tension of the warp threads to prepare the loom for weaving		4	1	3
	PC18. Analyze and maintain the tension of the warp threads uniformly by beating and inserting dummy weft		4	1	3
	PC19. Respond appropriately incase of any errors or faults in the warp and other pre-weaving operations and take corrective measures		3	1	2
		TOTAL	100	40	60
2. HCS/N 7806 (Carry out basic weaving operations: Shedding/Picking/Battening to weave mats comprising of basic weaves- Plain and Twill on hand operated loom)	PC1. Select the appropriate coloured bamboo sticks for insertion as wefts	100	8	4	4
	PC2. Ask questions to obtain more information on tasks when the instructions you have are unclear		5	2	3
	PC3. Use the correct tools and materials		3	2	1
	PC4. Check that the materials to be used are free from faults, incase of any report them		5	2	3
	PC5. Use the pedal to check if the shed formed is appropriate		4	1	3
	PC6. Carry-out the primary weaving operation of Shedding		7	2	5
	PC7. Carry-out the primary weaving		8	3	5

	operation of Picking				
	PC8. Carry-out the primary weaving operation of Battening		7	2	5
	PC9. Carry out beating uniformly		3	1	2
	PC10. Carry-out the secondary weaving operations of Take-up		5	2	3
	PC11. Carry-out the secondary weaving operations of Let-off		5	2	3
	PC12. Trim the edges of the woven mat evenly		3	1	2
	PC13. Reduce wastage and maintain quality while cutting to get desired finishing		3	1	2
	PC14. Use the designated measuring tool for measurement of mat		3	2	1
	PC15. Roll the mat, tag and store in a dry place		4	2	2
	PC16. Conform to company quality standards		7	3	4
	PC17. Report any damaged work to the responsible person		5	2	3
	PC18. Leave work area safe and secure when work is complete free from hazards		5	2	3
	PC19. Inspect the woven mats as per the specifications provided		5	2	3
	PC20. Perform all weaving-related operations with precision & accuracy		5	2	3
		TOTAL	100	40	60
3. HCS/N 7807 (Contribute to achieve quality in bamboo mat weaving)	PC1. Identify and use raw materials as per the specifications provided		10	3	7
	PC2. Take the necessary action when materials do not conform to quality standards	100	8	2	6

	PC3. Report and replace identified faulty materials and component parts which do not meet specification		6	2	4
	PC4. Identify modifiable defects and rework on them		10	4	6
	PC5. Carry out work safely and at a rate which maintains work flow		6	2	4
	PC6. Report to the responsible person when the work flow of other production areas disrupts work		8	4	4
	PC7. Carry out quality checks at specified intervals according to instructions		8	4	4
	PC8. Apply the allowed tolerances		10	4	6
	PC9. Identify faults and take appropriate action for rectification		10	4	6
	PC10. Make adjustments promptly to ensure the hand-woven mat matches the specification		10	4	6
	PC11. Fault-find materials and components for stained, damage and incorrectly made-up component parts		8	4	4
	PC14. Maintain the required productivity and quality levels		6	3	3
		TOTAL	100	40	60
4. HCS/N9908 (Working in a team)	PC1. Be accountable to one's own role in whole process of developing product	100	12	4	8
	PC2. Perform all roles with full responsibility		10	3	7
	PC3. Be effective and efficient at workplace		10	3	7

	PC4. Properly communicate about organisation's policies		8	4	4
	PC5. Talk politely with other team members and colleagues		10	3	7
	PC6. Adjust in different work situations		10	3	7
	PC7. Give due importance to others' point of view		10	3	7
	PC8. Avoid conflicting situations		10	2	8
	PC9. Develop new ideas for work procedures		8	2	6
	PC10. Improve upon the existing techniques to increase process efficiency		12	2	10
	TOTAL	100	29	71	
5. HCS/N 9912 (Maintain work area and tools)	PC1. Handle materials and tools safely and correctly	100	8	2	6
	PC2. Use materials to minimize waste		10	3	7
	PC3. Maintain a clean and hazard free working area		10	3	7
	PC4. Maintain the tools used for stick making		8	2	6
	PC5. Carry out maintenance and/or cleaning within one's responsibility		10	3	7
	PC6. Report damaged tools and materials		12	4	8
	PC7. Work in a comfortable position with correct posture		10	3	7
	PC8. Dispose of waste safely in designated location		12	4	8
	PC9. Store tools safely after use		10	3	7
	PC10. Carry out cleaning according to schedules and limits of responsibility		10	3	7
			TOTAL	100	30

6. HCS/N 9913 (Maintain health, safety and security at workplace)	PC1. Comply with health and safety related instructions applicable to the workplace	100	8	2	6
	PC2. Use and maintain personal protective equipment as per protocol		8	2	6
	PC3. Carry out own activities in line with approved guidelines and procedures		8	2	6
	PC4. Maintain a healthy lifestyle and guard against dependency on intoxicants		8	2	6
	PC5. Follow environment management system related procedures		6	2	4
	PC6. Store materials and tools in line with manufacturer's and organisational requirements		5	2	3
	PC7. Safely handle and move waste and debris		4	1	3
	PC8. Minimize health and safety risks to self and others due to own actions		6	2	4
	PC9. Seek clarifications from supervisors or other authorized personnel in case of perceived risks		4	1	3
	PC10. Monitor the workplace and work processes for potential risks and threats		4	1	3
	PC11. Carry out periodic walk-through to keep work area free from hazards and obstructions, if assigned		5	2	3
	PC12. Report hazards and potential risks/ threats to supervisors or other authorized personnel		7	3	4
	PC13. Participate in mock drills/		5	2	3

	evacuation procedures organised at the workplace				
	PC14. Undertake first aid, fire fighting and emergency response training, if asked		6	2	4
	PC15. Take action based on instructions in the event of fire, emergencies or accidents		8	2	6
	PC16. Follow organisation evacuation procedures		8	2	6
	TOTAL		100	30	70

SECTION 2
EVIDENCE OF LEVEL

Title/Name of qualification/component: Bamboo mat weaver		Level: 3	
NSQF Domain	Key requirements of the job role	How the job role relates to the NSQF level descriptors	NSQF Level
Process	<p>The Bamboo Mat Weaver carries out a job which requires limited range of activities carried out in a routine and is predictable which in this case are around weaving bamboo mats using hand operated looms. The examples for the same include tasks carried out to do the following</p> <ul style="list-style-type: none"> • carry out basic pre-loom operations such as denting and attaching the warp on the loom • carry out basic weaving operations including Shedding, Picking and Battening to weave mats comprising of basic weaves-plain & twill using hand operated loom. 	<p>The Qualification is at level 3 since all work is as per routine and there is no clear choice.</p>	3
Professional knowledge	<p>The Bamboo Mat Weaver needs basic facts, process and principle applied in trade of employment which in this case is weaving of bamboo mats as per specifications using hand operated looms.</p> <ul style="list-style-type: none"> • the basics of operating a hand operated loom • the processes involved in the pre-loom operations • the technique of weaving basic weaves- Plain and Twill • correct ways of handling the loom and materials 	<p>It is level 3 as the Bamboo Mat Weaver needs understanding of weaving and also to apply the same</p>	3

Professional skill	<p>The skills required for the job involve recall and demonstration of practical skill, which is routine and repetitive in narrow range of application.</p> <p>Examples:</p> <ul style="list-style-type: none"> • Choose the correct treatment vessel and chemicals for bleaching/dyeing/finishing of the bamboo craft materials as per specification. • Maintain the correct tension of the warp threads to prepare the loom for weaving. • Select the appropriate coloured bamboo sticks for carry-out the primary weaving operations. • insertion as wefts 	Factual Knowledge of Field of knowledge of study is not required for this level, therefore it is level 3.	3
Core skill	<p>The Bamboo Mat Weaver requires communication skills written and oral, with minimum required clarity, skill of basic arithmetic and algebraic principles including understanding of basic financial transactions.</p> <p>These are required for the following tasks:</p> <ul style="list-style-type: none"> • analyze & interpret the given design (plain or twill weave) which needs to be woven & the type of raw material that is required • select and check appropriate materials- bamboo sticks and yarn required for weaving the fabric as per the given specifications • respond appropriately in case of any errors or faults in the warp and other pre-weaving operations <p>apply the allowed tolerances</p>	Basic oral and written communication is required.	3
Responsibility	<p>The Bamboo Mat Weaver works largely on instruction from supervisor and laid down procedures. The weaver also has some responsibility for work including for delivery on time and as per schedules standards, but beyond that is not accountable</p> <p>Examples:</p> <ul style="list-style-type: none"> • take the necessary action when materials do not conform to quality standards • carry out work safely and at a rate which maintains 	Given the limited scope of responsibility for own learning and work this is at Level 3.	3

	work flow.		
--	------------	--	--

NSQF QUALIFICATION FILE GUIDANCE

Version 6: Draft of 08 March 2016

SECTION 3

EVIDENCE OF NEED

What evidence is there that the qualification is needed?

While collecting data from the companies for the occupational map, we also took feedback from industry, which was collected with respect to roles for which qualification packs development, was to be prioritized. This was largely based on volume of people required, quantitative and qualitative shortfall which the Industry feels they face. Governing council of HCSSC gave final approval and endorsement for the same.

What is the estimated uptake of this qualification and what is the basis of this estimate?

It is estimated that currently 75,000 Bamboo Mat weavers are engaged; of which the estimated uptake would be 52,500 of this qualification. The numbers have been estimated based on industry consultations, analysis of existing reports such as Skills Gap analysis Reports.

What steps were taken to ensure that the qualification(s) does (do) not duplicate already existing or planned qualifications in the NSQF?

NSDC list of Approved and Under-Development QPs was checked prior to commissioning the work

What arrangements are in place to monitor and review the qualification(s)? What data will be used and at what point will the qualification(s) be revised or updated?

Agencies have been appointed by the SSC to interact with training providers to gather feedback in implementation.

Monitoring of results of assessments

Employer feedback will be sought post-placement

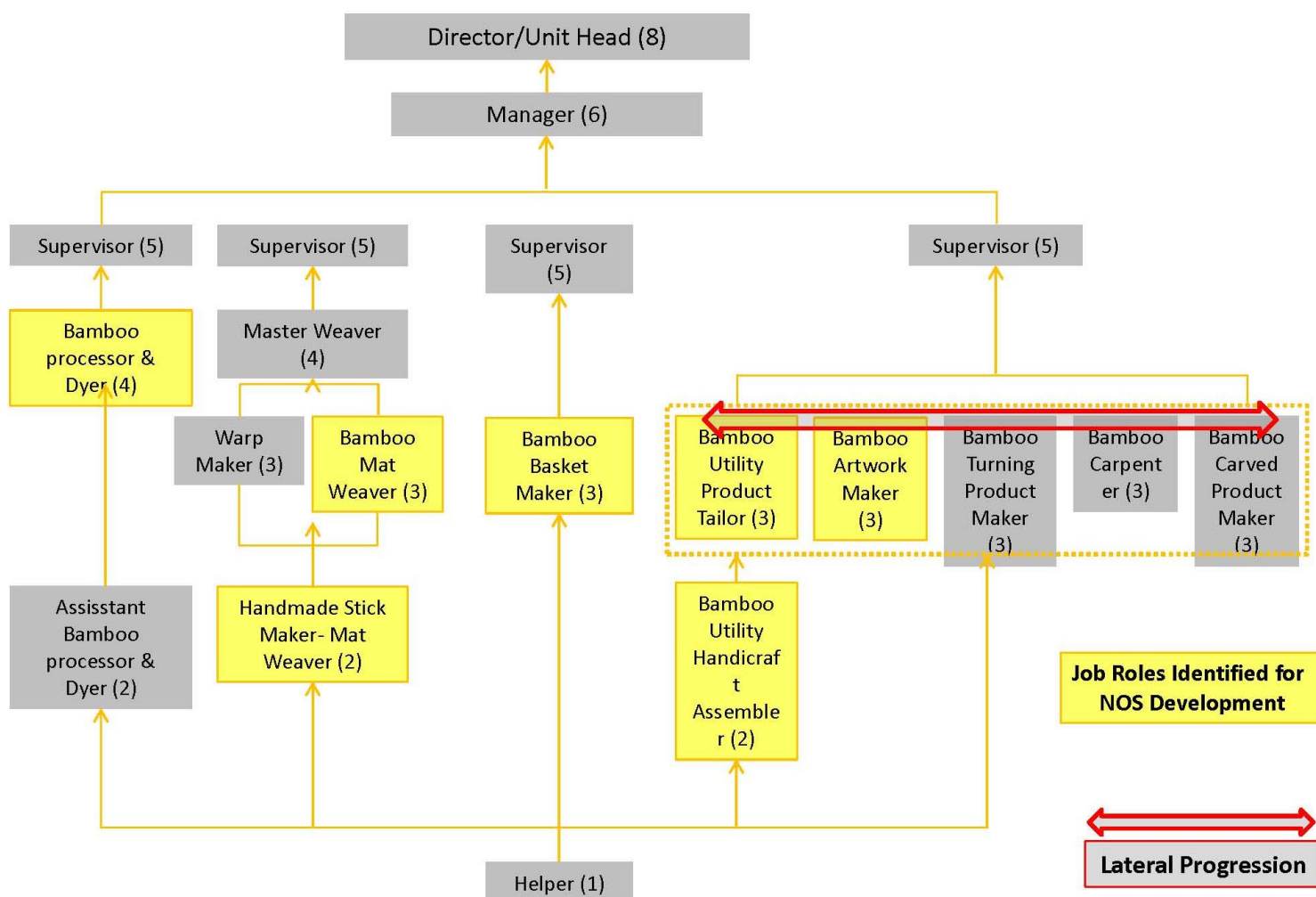
A formal review is scheduled in two year time i.e. 2018

SECTION 4
EVIDENCE OF PROGRESSION

What steps have been taken in the design of this or other qualifications to ensure that there is a clear path to other qualifications in this sector?

1. Vertical mobility options have been articulated in the occupational map
2. Vertical mobility is of a master mat weaver

Bamboo Handicrafts Subsector: Detailed Career progression



List of companies validating the QP

S. No	Name of Organisation	Contact Person	Employee Size
1	Tripura Bamboo Mission, Tripura	Mr. V. George Jenner, IFS	Large
2	Tripura Cottage Industries, Tripura	Mr. Manas Debnath	Large
3	Medni crafts Producer Company Ltd, Medinipur (WB)	Mr. Nimesh Kumar Barman	Large
4	Sahaj, Gujarat	Mr. Jabeen Jambhughldawala	Large
5	Benu (Bamboo Enterprises United), Tripura	Mr. Manna Roy	Large
6	Kalika Handicrafts Society, Tripura	Mr. Gauranga Debnath	Large
7	Parivartan, Jharkhand	Mr. Sudeep Saha	Large
8	NRDC, Odisha	Mr. P. K. Mohapatra	Large
9	Contemporary Bamboo Craft Society, Tripura	Mr. Anath Bandhu Sutradhar	Large
10	Gairing Society, Tripura	Mr. Tamash Kangdai	Large
11	Broocklieen, Kerela	Mr. Ashok Kumar. P	Large
12	Umathen Women Weaving and Handicraft Cooperative Society, Manipur	Mrs. M. Ibechoubi Leima	Large
13	Thongjao Rural Upliftment Society, Manipur	Ms. S. Kamala Devi	Large
14	Sristi Crafts & Stores, Tripura	Ms. Nandita Chakraborty	Medium
15	Modern Handicrafts, Tripura	Mr. Manoj Debnath	Medium
16	Mahamaya Handicrafts, Tripura	Mr. Badal Debnath	Medium
17	Chakraborty Handicrafts, Tripura	Mr. Tarun Chakraborty	Medium
18	Natural Weaves & Crafts, Tripura	Ms. Swapna Debnath	Medium
19	Nirmaan Fabrics, Guwahati	Mr. Bapan Sarkar	Medium
20	SHADE, AP	Ms. Sowjanya. P	Medium
21	SHARE, AP	Mr. P. Sudheer Kumar	Medium
22	Orissa Palli Bikash Pratisthan(OPBP), Odisha	Mr. Ojha	Medium
23	Kedar Dhar Industries, Tripura	Mr. Kallol Dhar	Medium
24	MaaKali Handicrafts, Tripura	Mr. Bhajan Sharma	Medium
25	Pioneer Bamboo Craft Society, Tripura	Mr. Bijoy Sutradhar	Medium
26	Women Welfare Society, tripura	Ms. Geeta Chakraborty	Medium
27	Swami Jogananda SHG , Agartala	Mrs. Jyotsna Debnath	Small
28	Creative weaving & Traditional Dresses Unit, Dimapur	Ms Aku Kaurinta Zeliang	Small
29	Art Core, Guwahati	Mr. Peburen Sarmah	Small
30	IndiStore, New Delhi	Ms. Sangeeta Sen	Small
31	Archana Cottage Industries, Tripura	Mr. Prabhod Debnath	Small
32	Bamanchara Nandakirshore Para Craft Producer Group, Tripura	Ms. Chitrita Choudhury	Small
33	Bishwakarama Kalakendra, tripura	Mr. Chunilal Debnath	Small
34	Das Enterprise, Tripura	Mr. Atanu Das	Small
35	Juri Craft Producer Grp, Tripura	Ms. Priyabrata Chabraborty	Small
36	Malancha Craft Producer Grp, Tripura	Ms. Ruma Gope (Barman)	Small
37	Matabari Craft Producer Grp, Tripura	Ms. Suman Sutradhar	Small
38	Rangitilla Craft Producer Grp, Tripura	Mr. Abhijit Sutradhar	Small
39	Sanchay Craft Producer Grp, Tripura	Ms. Mina Rani Das	Small
40	Srijoni, Tripura	Mr. Mithun Dey	Small
41	Uday Craft Producer Grp, Tripura	Ms. Sikha Das	Small
42	Ujjayanta Craft Producer Grp, Tripura	Ms. Purnima Deb(Datta)	Small