

NSQF QUALIFICATION FILE GUIDANCE

Version 6: Draft of 08 March 2016

NSDA Reference

To be added by NSDA

CONTACT DETAILS OF THE BODY SUBMITTING THE QUALIFICATION FILE

Name and address of submitting body:

HCSSC,
Handicrafts and Carpet Sector Skill Council,
EPCH House,
Pocket 6 & 7, Sector C,
Vasant Kunj,
New Delhi-110070

Name and contact details of individual dealing with the submission

Name: Ms. Anupama Giri

Position in the organisation: CEO

Address if different from above: NO

Tel number(s):011-2613983491

E-mail address: ceo@hcssc.in

List of documents submitted in support of the Qualifications File

1. Career Progression of Carpet Sub-Sector
2. Qualification Pack
3. Minutes of the meeting of GC Consultation meeting
4. NSDC Human Resource & Skills Requirement in Handloom & Handicraft Sector
5. List of QP/NOS validating companies.

NSQF QUALIFICATION FILE GUIDANCE

Version 6: Draft of 08 March 2016

SUMMARY

Qualification Title-	Carpet Weaver (Tufted)
Qualification Code-	HCS/Q5702
Nature and purpose of the qualification-	Qualification pack, To prepare people to work in the carpet industry
Body/bodies which will award the qualification-	Handicrafts and carpet sector skill council(HCSSC)
Body which will accredit providers to offer courses leading to the qualification-	Handicrafts and carpet sector skill council(HCSSC)
Body/bodies which will carry out assessment of learners-	Handicrafts and carpet sector skill council (HCSSC)
Occupation(s) to which the qualification gives access-	Carpet making
Licensing requirements- N/A	N/A
Level of the qualification in the NSQF-	3
Anticipated volume of training/learning required to complete the qualification-	250
Entry requirements and/or recommendations-	5 th class
Progression from the qualification-	Tufted Gun Master
Planned arrangements for the Recognition of Prior learning (RPL)-	A 3-day RPL program has been devised to certify the trainees.
Date of planned review of the qualification-	2018

Formal structure of qualification pack

Title of component & identification code	Mandatory/optional	Estimated size/learning hours	Level
HCS/N5705 Perform tufted carpet weaving as per given design	Mandatory	110	3
HCS/N9907 Receive, track and handle payments as per work done	Mandatory	70	3
HCS/N9908 Use basic health and safety practices while weaving carpets	Mandatory	40	3
CSC/N1336 Work effectively with others	Mandatory	30	3

Please attach any document giving further detail about the structure of the qualification – eg a Curriculum Document or a Qualification Pack.

Qualification pack attached in annexure.

NSQF QUALIFICATION FILE GUIDANCE

Version 6: Draft of 08 March 2016

SECTION 1 ASSESSMENT

Body/Bodies which will carry out assessment:-

The assessment bodies affiliated to the handicrafts & carpet sector skill council will carry out the assessment.

How will RPL assessment be managed and who will carry it out?-

RPL will be based on the same approved Qualification Pack and Assessment Criteria mentioned in the Qualification Pack. The process of RPL assessment is going to be managed by the Assessment agency affiliated by the HCSSC.

Describe the overall assessment strategy and specific arrangements which have been put in place to ensure that assessment is always valid, reliable and fair and show that these are in line with the requirements of the NSQF.

The assessment is managed by the assessment agency using the question bank approved by the sector skill council which has both the theory and practical questions ,the questions are then divided into many different sets so that all students don't get the same questions once the assessment is done the result is compiled and sent to the sector skill council .The NSQF level 2 and 3 qualifications has a passing marks of 50% and NSQF level 4 and above has 70% as passing marks.

ASSESSMENT EVIDENCE

Complete a grid for each component as listed in "Formal structure of the the qualification" in the Summary.

NOTE: this grid can be replaced by any part of the qualification documentation which shows the same information – ie Learning Outcomes to be assessed, assessment criteria and the means of assessment.

NSQF QUALIFICATION FILE GUIDANCE

Version 6: Draft of 08 March 2016

CRITERIA FOR ASSESSMENT OF TRAINEES

Job Role : Automatic Stick Making M/C Operator

Qualification Pack : HCS/Q7803

Sector Skill Council : Handicrafts & Carpet Sector Skill Council

Guidelines for Assessment:

1. Criteria for assessment for each Qualification Pack will be created by the Sector Skill Council. Each Performance Criteria (PC) will be assigned marks proportional to its importance in NOS. SSC will also lay down proportion of marks for Theory and Skills Practical for each PC.
2. The assessment for the theory part will be based on knowledge bank of questions created by the SSC.
3. Individual assessment agencies will create unique question papers for theory part for each candidate at each examination/training center (as per assessment criteria below)
4. Individual assessment agencies will create unique evaluations for skill practical for every student at each examination/training center based on this criteria
5. To pass the Qualification Pack , every trainee should score a minimum of 70% in every NOS
6. In case of successfully passing only certain number of NOS's, the trainee is eligible to take subsequent assessment on the balance NOS's to pass the Qualification Pack.

Assessable Outcomes	Assessment Criteria	Total	Out of	Theory	Practical
HCS/N5705 Perform tufted carpet weaving as per given design	PC1. use protective mask for protection from inhaling cotton and wool dust and adequate footwear to save from stepping on sharp objects.	100	5	1	4
	PC2. state the name and location of people responsible for health and safety in the		4	1	3
	PC3. identify job-site hazardous work and state possible causes of risk or accident in the		4	1	3
	PC4. carry out safe working practices while dealing with hazards to ensure the safety of		5	1	4
	PC5. identify various tools and materials used in carpet weaving		2	0	2
	PC6. prepare the tools appropriately for		2	0	2
	PC7. identify any damage or malfunctioning		3	1	2
	PC8. use appropriate care procedures for routine maintenance or for troubleshooting,		4	1	3
	PC9. receive order pack containing processed and dyed raw material, design and description of the work from a valid source		3	0	3

PC10. extract key information from the design graph and order description	3	1	2
PC11. read and interpret the terminology used on the design map in local language or	3	1	2
PC12. read and extract key information in order description in local language and English	3	1	2
PC13. check the map for any inconsistency or missing information	3	1	2
PC14. cross check the raw material given with the description given in the order pack and coding given in the design map	3	1	2
PC15. communicate to the contact person as per the contact person details mentioned in the order description in case there is a discrepancy or doubt in the map or raw	3	0	3
PC16. select the primary fabric as per the requirement of the order	3	1	2
PC17. determine the yardage of fabric required from the dimension details in the	4	1	3
PC18. stretch the primary fabric on the loom securely and without damage to the fabric as per the dimensions of the carpet to be woven	3	1	2
PC19. select equipment and material required for preparation of stencil and tracing on	2	0	2
PC20. prepare and pin hole the stencil as per	3	1	2
PC21. trace the design from the stencil to the primary fabric accurately	3	1	2
PC22. perform checks on all equipment before starting the weaving	2	0	2
PC23. rectify problems that are within own's control and seek help if unable to resolve the	4	1	3
PC24. wind the yarn into spools or rolls that can easily unwind	2	0	2
PC25. set the yarn spools or rolls on the spool rack attached to the warp structure in the form of a beam or rope to keep them from getting	4	1	3
PC26. select the correct tufting gun and adjust its setting as per the requirement which includes loop or cut pile; size of the pile; etc.	4	1	3
PC27. load the yarn end on the tufting gun	3	0	3
PC28. sit comfortably and position self in such a way that the weaving can be done without	4	1	3

	PC29. perform the tufted weaving stitch with neatness and accuracy as per the design		6	2	4
	PC30. join yarn neatly and securely when				
			3	0	3
		Total	100	22	78
HCS/N9907	PC1. cross check if the correct amount has been received as per the work agreement and/or agreed basis of payment		25	5	20
Receive, track and handle payments as per work done	PC2. keep track of expenses and payments		25	5	20
	PC3. follow up for non-receipt of payment with the appropriate authorities		20	5	15
	PC4. open a bank account and perform basic operations	100	30	10	20
		Total	100	25	75
HSC/N9908	PC1. use protective clothing/equipment for specific tasks and work conditions		4	1	3
Use basic health and safety practices while weaving carpets	PC2. state the name and location of people responsible for health and safety in the workplace		5	2	3
	PC3. identify job-site hazardous work and state possible causes of risk or accident in the workplace		5	2	3
	PC4. carry out safe working practices while dealing with hazards to ensure the safety of self and others		5	2	3
	PC5. state methods of accident prevention in the work environment of the job role		5	1	4
	PC6. state location of general health and safety equipment in the workplace		4	0	4
	PC7. apply good housekeeping practices at all times	100	5	0	5
	PC8. identify common hazard signs displayed in various areas		4	1	3
	PC9. use the various appropriate fire extinguishers on different types of fires correctly		5	1	4
	PC10. demonstrate rescue techniques applied during fire hazard		5	2	3
	PC11. demonstrate good housekeeping in order to prevent fire hazards		4	1	3
	PC12. demonstrate the correct use of a fire extinguisher		5	1	4
	PC13. demonstrate how to free a person from electrocution		4	1	3
	PC14. administer appropriate first aid to victims where required e.g. in case of bleeding, burns, choking, electric shock, poisoning, etc.		5	1	4

	PC15. demonstrate basic techniques of bandaging		4	1	3
	PC16. respond promptly and appropriately to an accident situation or medical emergency in real or simulated environments		4	0	4
	PC17. perform and organize loss minimization or rescue activity during an accident in real or simulated environments		4	0	4
	PC18. administer first aid to victims in case of a heart attack or cardiac arrest due to electric shock, before the arrival of emergency services in real or simulated cases		4	1	3
	PC19. demonstrate the artificial respiration and the CPR Process		5	1	4
	PC20. participate in emergency procedures		4	1	3
	PC21. complete a written accident/incident report or dictate a report to another person, and send report to person responsible		6	2	4
	PC22. demonstrate correct method to move injured people and others during an		4	1	3
		Total	100	23	77
CSC/N1336	PC1. accurately receive information and instructions from the supervisor and fellow workers, getting clarification where required	100	10	3	7
Work effectively	PC2. accurately pass on information to authorized persons who require it and within agreed timescale and confirm its receipt		10	3	7
With others	PC3. give information to others clearly, at a pace and in a manner that helps them to understand		10	3	7
	PC4. display helpful behavior by assisting others in performing tasks in a positive manner, where required and possible		10	3	7
	PC5. consult with and assist others to maximize effectiveness and efficiency in carrying out tasks		10	3	7
	PC6. display appropriate communication etiquette while working		10	3	7
	PC7. display active listening skills while interacting with others at work		10	3	7
	PC8. use appropriate tone, pitch and language to convey politeness, assertiveness, care and professionalism		10	3	7
	PC9. demonstrate responsible and disciplined behaviors at the workplace		10	3	7

	PC10. escalate grievances and problems to appropriate authority as per procedure to resolve them and avoid conflict		10	3	7
	Total		100	30	70

NSQF QUALIFICATION FILE GUIDANCE

Version 6: Draft of 08 March 2016

SECTION 2

EVIDENCE OF LEVEL

Title/Name of qualification/component: Carpet Weaver - Tufted		Level: 3	
NSQF Domain	Key requirements of the job role	How the job role relates to the NSQF level descriptors	NSQF Level
Process	<p>The Carpet Weaver (Tufted) carries out a job which requires limited range of activities carried out in a routine and is predictable which in this case are around weaving tufted carpets using hand operated looms. The examples for the same include tasks carried out to do the following</p> <ul style="list-style-type: none"> • carry out basic pre-loom operations such as denting and attaching the warp on the loom • Carry out basic weaving operations including Shedding, Picking and Battening to weave mats comprising of basic weaves-plain & twill using hand operated loom. 	<p>The Qualification is at level 3 since all work is as per routine and there is no clear choice.</p>	3
Professional knowledge	<p>The Carpet Weaver (Tufted) needs basic facts, process and principle applied in trade of employment which in this case is weaving of tufted carpets as per specifications using hand operated looms.</p> <ul style="list-style-type: none"> • the basics of operating a hand operated loom • the processes involved in the pre-loom operations • the technique of weaving basic weaves- Plain and Twill • correct ways of handling the loom and materials 	<p>It is at level 3 as the Carpet Weaver needs understanding of weaving and to apply the same</p>	3

Professional skill	<p>The skills required for the job involve recall and demonstration of practical skill, which is routine and repetitive in narrow range of application.</p> <p>Examples:</p> <ul style="list-style-type: none"> • choose the correct treatment vessel and chemicals for bleaching/dyeing/finishing of the craft materials as per specification • Maintain the correct tension of the warp threads to prepare the loom for weaving. • Select the appropriate coloured yarns to carry-out the primary weaving operations. • insertion as wefts 	Factual Knowledge of Field of knowledge of study is not required for this level; therefore it is at level 3.	3
Core skill	<p>The Carpet Weaver requires communication skills written and oral, with minimum required clarity, skill of basic arithmetic and algebraic principles including understanding of basic financial transactions.</p> <p>These are required for the following tasks:</p> <ul style="list-style-type: none"> • analyze & interpret the given design (plain or twill weave) which needs to be woven & the type of raw material that is required • select and check appropriate materials- yarns required for weaving the fabric as per the given specifications • respond appropriately in case of any errors or faults in the warp and other pre-weaving operations • apply the allowed tolerances. 	It requires basic oral and written communication skills.	3
Responsibility	<p>The carpet weaver works largely on instruction from supervisor and laid down procedures. The weaver also has some responsibility for work including for delivery on time and as per schedules standards, but beyond that is not accountable</p> <p>Examples:</p> <ul style="list-style-type: none"> • take the necessary action when materials do not conform to quality standards • carry out work safely and at a rate which maintains work 	Given the limited scope of responsibility for own learning and work this is at level3	3

	flow.		
--	-------	--	--

NSQF QUALIFICATION FILE GUIDANCE

Version 6: Draft of 08 March 2016

SECTION 3

EVIDENCE OF NEED

What evidence is there that the qualification is needed?

Please refer to the attached list of job roles and occupations as per the attachment and their career paths as per Annexure 2, which have been derived through extensive industry interactions facilitated from various workshops, and site visits conducted and interaction with representatives from different organizations all over the country. Research was conducted in the Carpet sector to capture revenue and manpower requirement estimates till 2022. The research provides the data that the discussed qualification is one of the critical roles in the sector. While collecting data from the companies for the occupational map, we also took feedback from industry, which was collected with respect to roles for which qualification packs development, was to be prioritized. This was largely based on volume of people required, quantitative and qualitative shortfall which the Industry feels they face. Governing council of HCSSC gave final approval and endorsement for the same

What is the estimated uptake of this qualification and what is the basis of this estimate?

The increase in manpower requirements (as per projections) from 2013 to 2022, especially for roles covered under Level 3 as per NSQF classification are expected to witness a high demand and are to be provided in research analysis study.

What steps were taken to ensure that the qualification(s) does (do) not duplicate already existing or planned qualifications in the NSQF?

NSDC list of Approved and Under-Development QPs was checked prior to commissioning the work

What arrangements are in place to monitor and review the qualification(s)? What data will be used and at what point will the qualification(s) be revised or updated?

Agencies have been appointed by the SSC to interact with training providers to gather feedback in implementation.

Monitoring of results of assessments

Employer feedback will be sought post-placement

A formal review is scheduled in two year time i.e. 2018

Please attach any documents giving further information about any of the topics above.

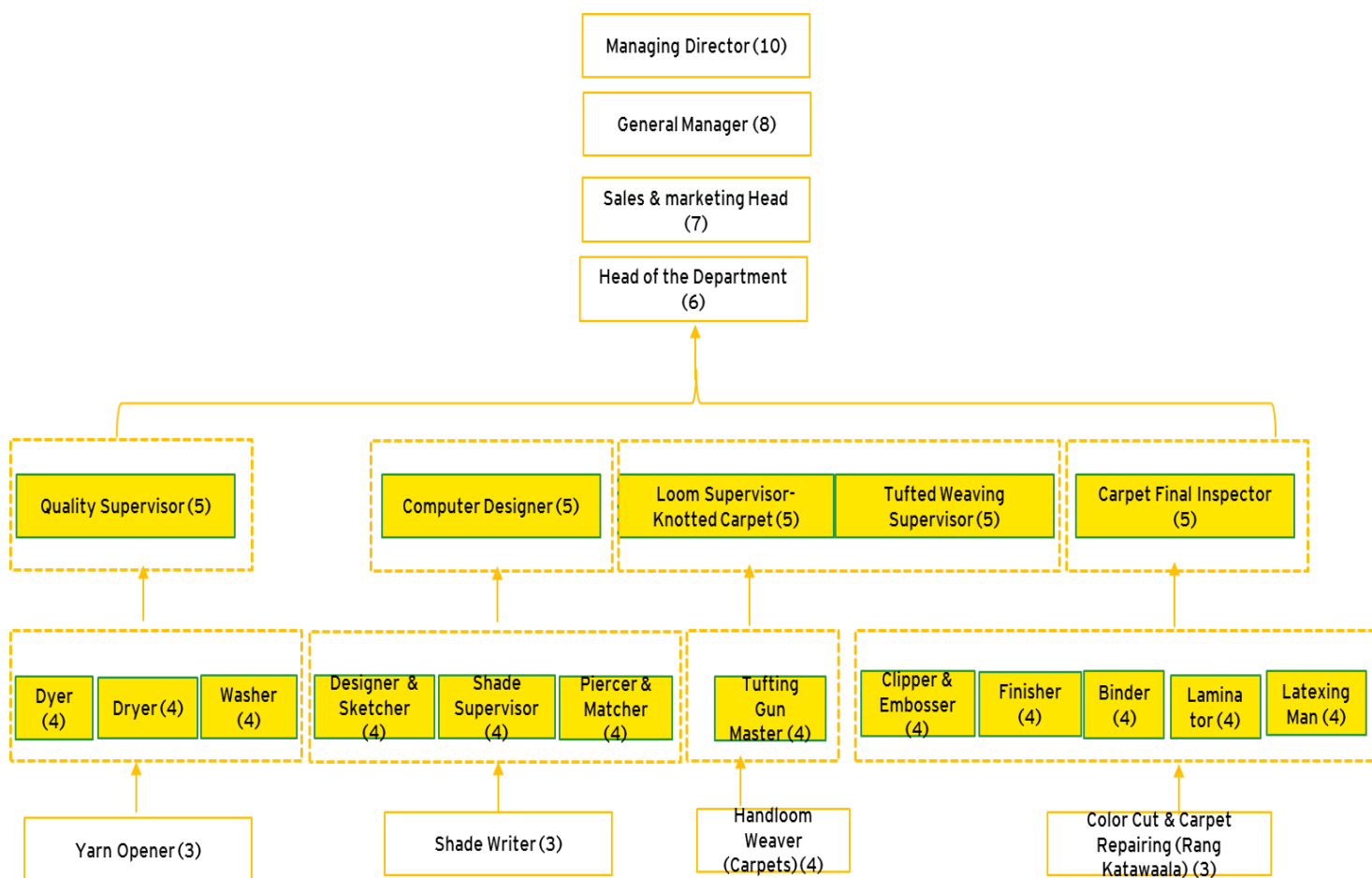
Give the titles and other relevant details of the document(s) here. Include page references showing where

to find the relevant information.

SECTION 4 EVIDENCE OF PROGRESSION

What steps have been taken in the design of this or other qualifications to ensure that there is a clear path to other qualifications in this sector?

Horizontal and vertical mobility options have been articulated in occupational map & Career Progression matrix.



List of companies validated the QP

S. No	Name of the Organisation	Contact Person	Employee - Size
1	Ajaz Carpets	Haris	Large
2	M.H.Khan Exports	Mohd. Haris Khan	Large
3	Jaipur Rugs	Sanjay Singh	Large
4	Modern Rugs	Mazhar Asif ansari	Large
5	Bhadohi Carpets	Prashant	Large
6	Mughal Carpets Industry	R R Gupta	Large
7	Creative Line	MOHD. ANIS ANSAR	Large
8	Raj Overseas	Dinesh Vashisht	Large
9	Ajay Exports	Jagdish Chand Jaiswal	Large
10	Husain International	Tanvir Hussain	Large
11	Raheem & Sons	Shah Mohammad	Medium
12	Sunder Carpet Company	M. Gupta	Medium
13	Looms Creations	Rama Kant Pandey	Medium
14	M C Design & Trades	H N Maurya	Medium
15	Shamshi Exports	Manoj Kumar Prajapati	Medium
16	AGR Handicrafts	Iqbal Ahmed	Medium
17	Kumar Carpet Industries	Gagan Kumar	Medium
18	Classic Carpet Industries	Dharmendra Kumar	Medium
19	Ravindra Carpets Industries	Pradeep	Medium
20	Pratap Carpets	Prem Shankar Singh	Medium
21	Masnuaat-E-Hind	Aezaz Mahmood	Small
22	Qamrun-Nas & Sons	Riaz mahmod Ansari	Small
23	Shyam Carpets	Dashrath Prasad jaiswal	Small
24	Tiwari Carpet Palace	Shiv Sagar Tiwari	Small

25	Yati Overseas	Anil Kumar	Small
26	Ajay Carpets	Dinesh Chand Jaiswal	Small
27	Hand Rugs Exports	Mohd. Saif Ansari	Small
28	Nisha International	Azhar Mahmood	Small
29	Zeds Carpet	Akhtar Ansari	Small
30	Lucky Export	Shyam Narain Yadav	Small